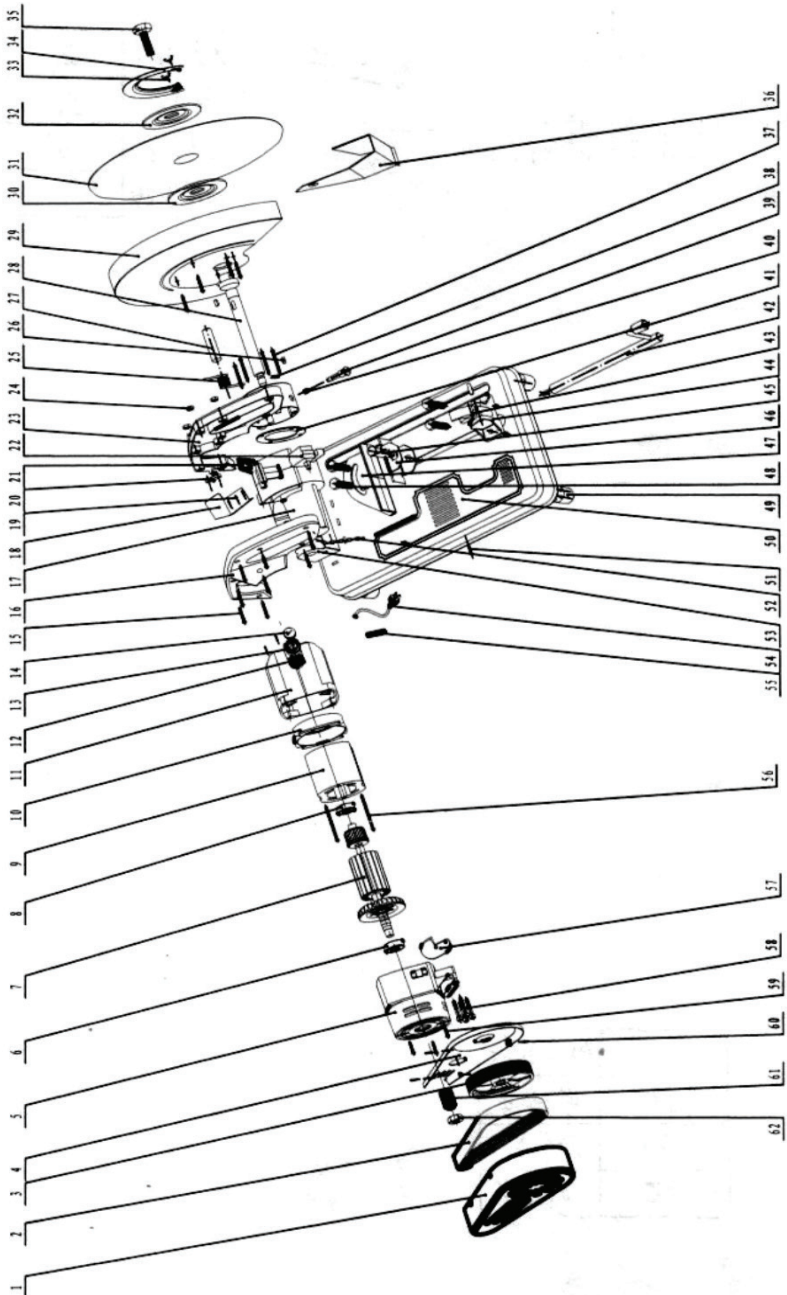


Spare Parts List of Cut off machine for metal RD-CM08



Exploded drawing of Cut off machine for metal RD-CM08

part	Description of spear parts	Quan	part	Description of spear parts	Quantity
1	belt cover(right)	1	33	Dishing Screw	1
2	belt	1	34	Side Cover	1
3	The big wheel of belt	1	35	outer Hexagon Nut	2
4	belt cover(left)	1	36	Small Guard	1
5	The cover of	1	37	Cross Screw	4
6	Bearing6202	1	38	Sping	2
7	Armature	1	39	Lock pin	1
8	Bearing6201	1	40	Small Spring	1
9	Stator	1	41	Rubber Washer	1
10	Anti-wind Ring	1	42	Long Screw	1
11	Housing	1	43	Elbow Screw	1
12	Carbon brush	2	44	The Nut Holder	1
13	Brush holder	2	45	Straight Pin	1
14	Brush cap	2	46	Adjustable Board	1
15	Cross Screw M4*40	4	47	Fixed Board	1
16	left handle	1	48	Hexagon Nut	4
17	Bearing Box	1	49	Rubber Foot	3
18	Small Clamp	1	50	Metal Base	1
19	Cross Screw M4*8	8	51	Pin	2
20	Cord Anchorage	1	52	Chain	1
21	Small Board	1	53	Underprop	1
22	Switch	1	54	Cord	1
23	Right Handle	1	55	Cord Armor	1
24	Outer Hexagon Nut M4	4	56	Cross Screw	2
25	Big Spring	1	57	Anchorage of Housing Cord	1
26	Fixed Key	1	58	inner Hexagon Nut	4
27	Fixed Pin	1	59	Cross Screw	4
28	Spindle	1	60	Cross Screw	4
29	Fixed Protection Cover	1	61	The small wheel of belt	1
30	Clamp A	1	62	outer Hexagon Nut	2
31	Cutting disc	1	63		
32	Clamp B	1	64		